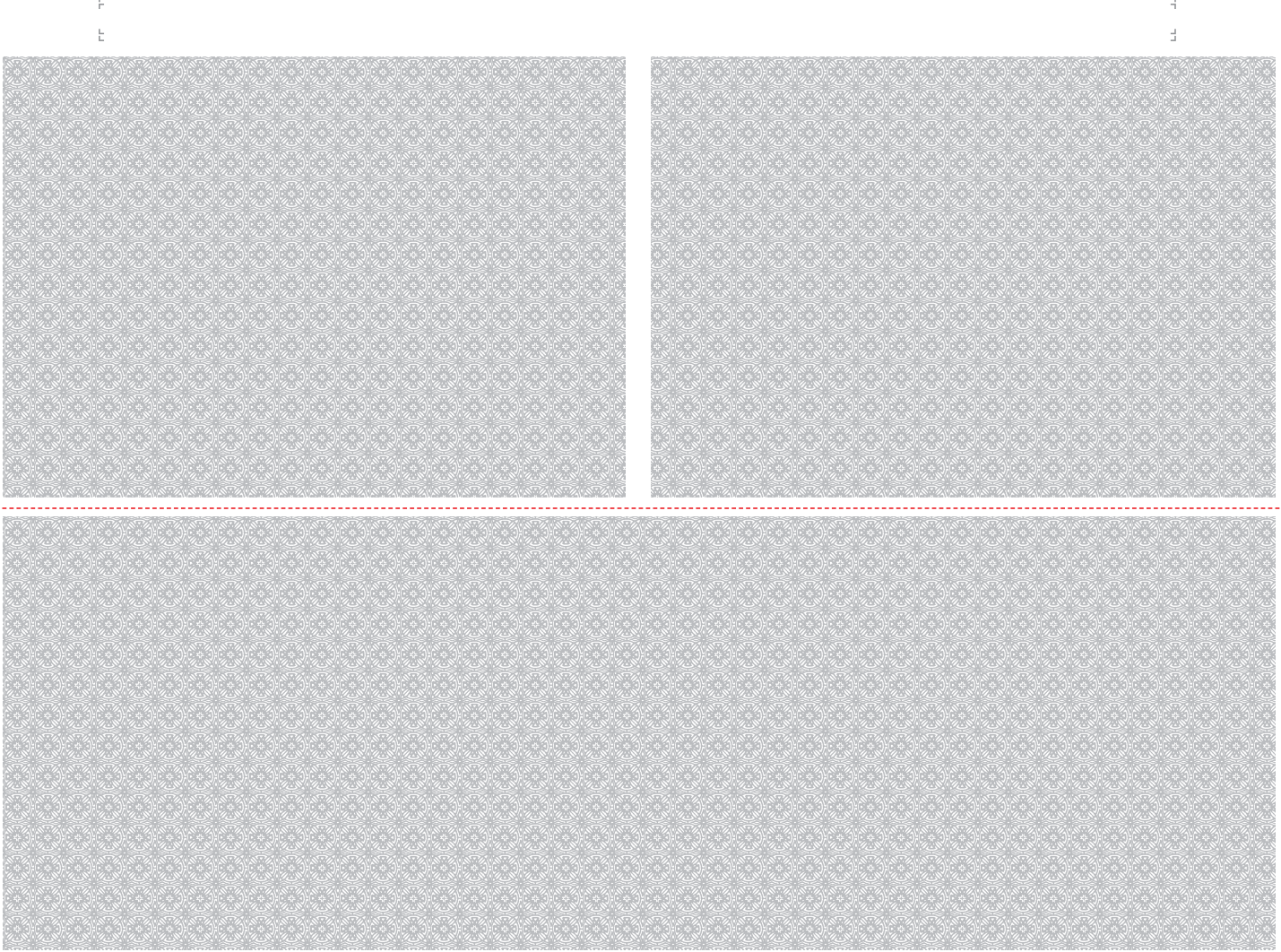


REMOVE SIDE EDGES FIRST
SLIDE FINGER BETWEEN FRONT & MIDDLE PANEL TO OPEN

REMOVE THESE EDGES FIRST
FOLD, CREASE AND TEAR ALONG PERFORATION

REMOVE THESE EDGES FIRST
FOLD, CREASE AND TEAR ALONG PERFORATION

SEE REVERSE SIDE FOR
OPENING INSTRUCTIONS



D