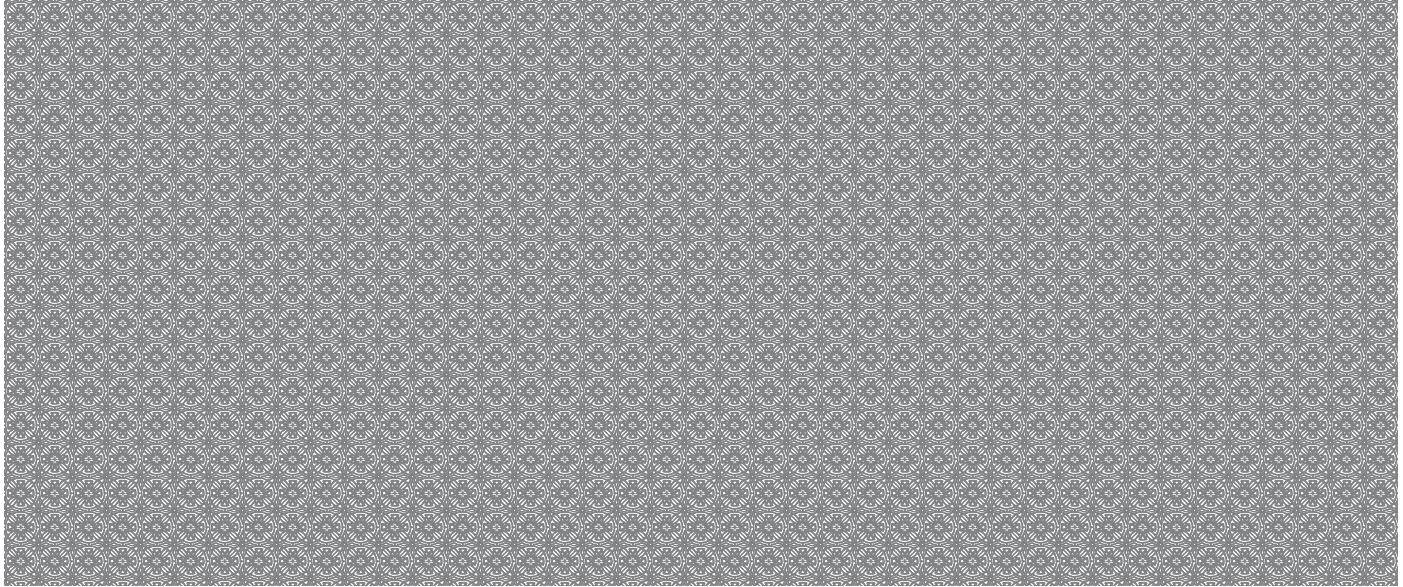


REMOVE SIDE EDGES FIRST
SLIDE FINGER BETWEEN FRONT & MIDDLE PANEL TO OPEN

REMOVE THESE EDGES FIRST
FOLD, CREASE AND TEAR ALONG PERFORATION

REMOVE THESE EDGES FIRST
FOLD, CREASE AND TEAR ALONG PERFORATION



Instructions for Recipient

Recipient's taxpayer identification number (TIN). For your protection, this form may show only the last four digits of your TIN (SSN, ITIN, ATIN, or EIN). However, the issuer has reported your complete TIN to the IRS.

Account number. May show an account or other unique number the payer has assigned to distinguish your account.

Caution: Identity Theft (IDT). If you suspect that you are a victim of IDT, do not report the incorrect amount shown in box 1 of Form(s) 1099-G on your tax return. Go to www.irs.gov/idtheftunemployment for more information.

Box 1. Shows the total unemployment compensation (UC) paid to you in the calendar year reported. Combine the box 1 amounts from all Forms 1099-G and report the total as income on the UC line of your tax return. Except as explained below, this is your taxable amount. If you made contributions to a governmental UC program or to a governmental paid family leave program and received a payment from that program, the payer must issue a separate Form 1099-G to report this amount to you. If you itemize deductions, you may deduct your contributions on Schedule A (Form 1040) as taxes paid. If you do not itemize, only include in income the amount that is in excess of your contributions.

Box 2. Shows refunds, credits, or offsets of state or local income tax you received. It may be taxable to you if you deducted the state or local income tax paid on Schedule A (Form 1040). Even if you did not receive the amount shown, for example, because (a) it was credited to your state or local estimated tax, (b) it was offset against federal or state debts, (c) it was offset against other offsets, or (d) you made a charitable contribution from your refund, it is still taxable if it was deducted. If you received interest on this amount, you may receive Form 1099-INT for the interest. However, the payer may include interest of less than \$600 in the blank box next to box 9 on Form 1099-G. Regardless of whether the interest is reported to you, report it as interest income on your tax return. See your tax return instructions.

Box 3. Identifies the tax year for which the box 2 refunds, credits, or offsets

shown were made.

Box 4. Shows backup withholding or withholding you requested on unemployment compensation, Commodity Credit Corporation (CCC) loans, or certain crop disaster payments. Generally, a payer must backup withhold on certain payments if you did not give your TIN to the payer. See Form W-9 for information on backup withholding. Include this amount on your income tax return as tax withheld.

Box 5. Shows reemployment trade adjustment assistance (RTAA) payments you received. Include on the "Other income" line of Schedule 1 (Form 1040).

Box 6. Shows taxable grants you received from a federal, state, or local government.

Box 7. Shows your taxable Department of Agriculture payments. If the payer shown is anyone other than the Department of Agriculture, it means the payer has received a payment, as a nominee, that is taxable to you. This may represent the entire agricultural subsidy payment received on your behalf by the nominee, or it may be your pro rata share of the original payment. See Pub. 225 and the Schedule F (Form 1040) instructions for information about where to report this income. Partnerships, see Form 8825 for how to report.

Box 8. If this box is checked, the amount in box 2 is attributable to an income tax that applies exclusively to income from a trade or business and is not a tax of general application. If taxable, report the amount in box 2 on Schedule C or F (Form 1040), as appropriate.

Box 9. Shows market gain on CCC loans whether repaid using cash or CCC certificates. See the Schedule F (Form 1040) instructions.

Boxes 10a–11. State income tax withheld reporting boxes.

Future developments. For the latest information about developments related to Form 1099-G and its instructions, such as legislation enacted after they were published, go to www.irs.gov/Form1099G.

Free File Program. Go to www.irs.gov/FreeFile to see if you qualify for no-cost online federal tax preparation, e-filing, and direct deposit or payment options.

X