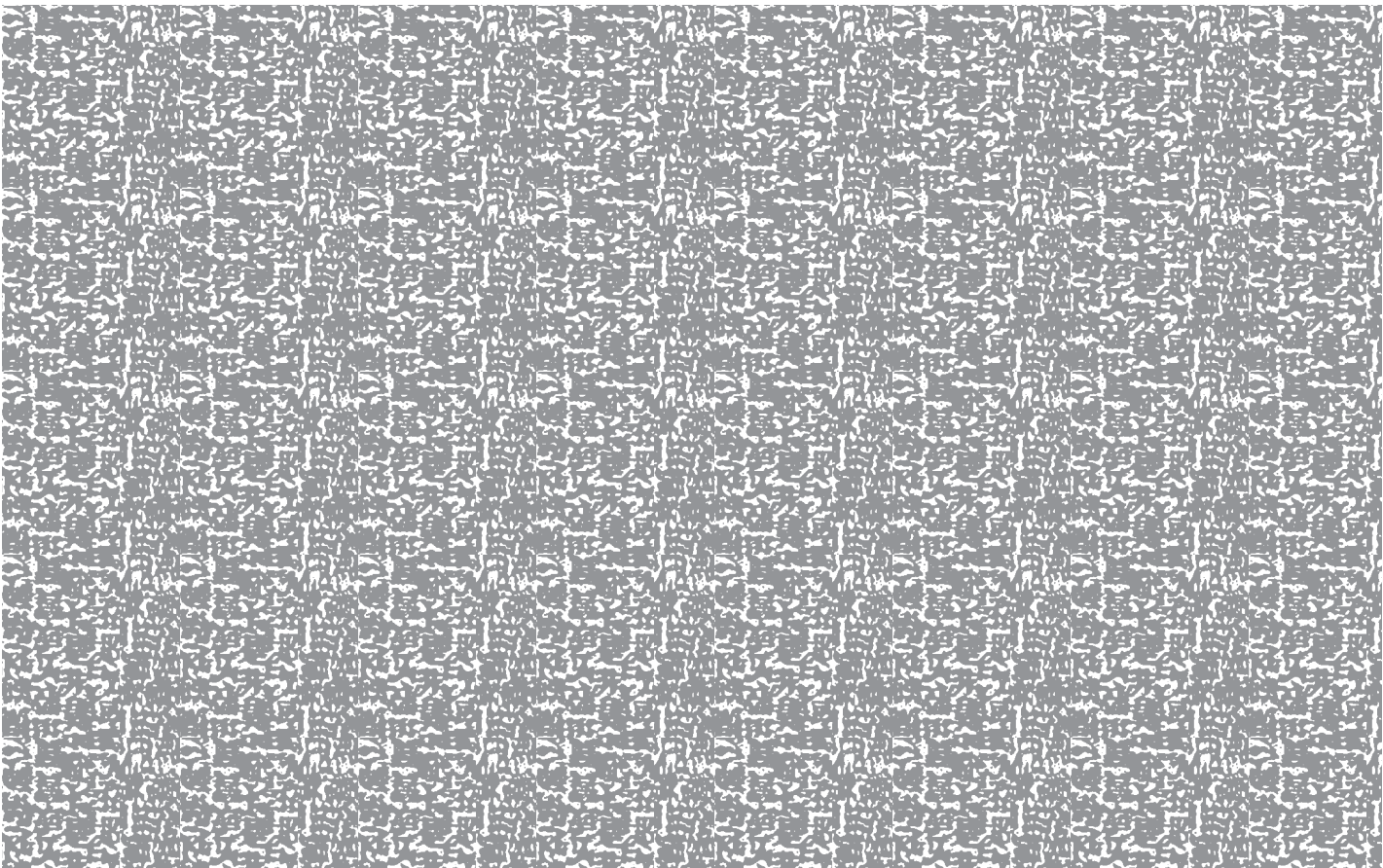


REMOVE SIDE EDGES FIRST
THEN FOLD AND TEAR THIS STUB ALONG PERFORATION

REMOVE THESE EDGES FIRST
FOLD, CREASE AND TEAR ALONG PERFORATION

REMOVE THESE EDGES FIRST
FOLD, CREASE AND TEAR ALONG PERFORATION

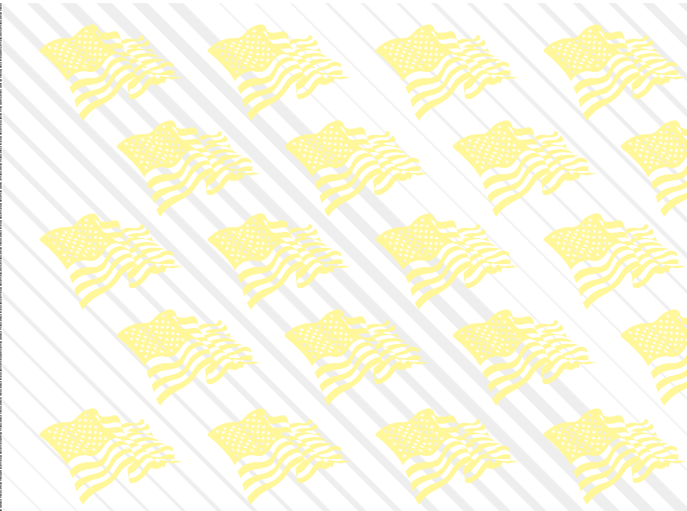


ENDORSE HERE

X

DO NOT WRITE, STAMP OR SIGN BELOW THIS LINE
RESERVED FOR FINANCIAL INSTITUTION USE*

MP



1 The security features listed below, as well as those not listed, exceed industry guidelines.

Security Features

- Prismatic Background
 - Invisible Fibers
 - Visible Fibers
 - Chemical Protection
 - Aniline Dye Numbering
 - Foundriener Watermark
 - Microprinting "MP"
 - Hi-Res Border
 - Artificial Watermark
 - Laid Lines
 - Bottom Warning Band
 - Thermochromic Ink
- Description**
- Face of check has a green & blue background.
 - Fluorescent Fibers are visible under ultraviolet light.
 - Fibers are randomly embedded in the paper.
 - When chemically altered, the area treated will appear as a brown stain or spot.
 - The ink permeates the paper fibers and cannot be removed or altered.
 - A pattern set into the paper at the mill. Hold to the light to see.
 - Small type appears as dotted line when photocopied.
 - The face of this check as an intricate, hi-res border that is difficult to reproduce.
 - Invisible watermark on back of check will appear when rubbed with a coin, under ultraviolet light or hold at an angle to view.
 - Laid Lines on back of check should be in alignment to protect against cut and paste.
 - Warning band at bottom of check lists security features.
 - Pink spot on face of check should disappear when rubbed with thumb or finger.

* © Padlock design is a certification mark of Check Payment Systems Association. MP